
GILSON ENGINEERING O&G UPSTREAM INDUSTRY GUIDE

www.gilsoneng.com



Instrumentation and Control Products for Gas Production & Transmission Companies

PITTSBURGH, PA

535 Rochester Road
Pittsburgh, PA 15237-1747
p (412) 369-0100
f (412) 366-1728

COLUMBUS, OH

2697 Sawbury Blvd
Columbus, OH 43235
p (614) 889-2150
f (614) 889-6038

CLEVELAND, OH

4660 Main Hill Drive
Seven Hills, OH 44131
p (440) 543-0300
f (440) 543-1230

CINCINNATI, OH

10984 Main Street #1
Cincinnati, OH 45241
p 800-860-4499
f (412) 348-3042

CHARLESTON, WV

3501 MacCorkle Ave SE #143
Charleston, WV 25302
p (304) 342-0012
f (304) 342-0085

TOLEDO, OH

26953 Mingo Drive
Perrysburg, OH 43551
p (419) 874-1178
f (419) 874-5333

LOUISVILLE, KY

711 Bass Lane
Shelbyville, KY 40065
p 800-860-4499
f 412-348-3042

ORLANDO, FL

144 Harston Ct
Heathrow, FL 32746
p (407) 444-0334
f (407) 444-0335

TAMPA, FL

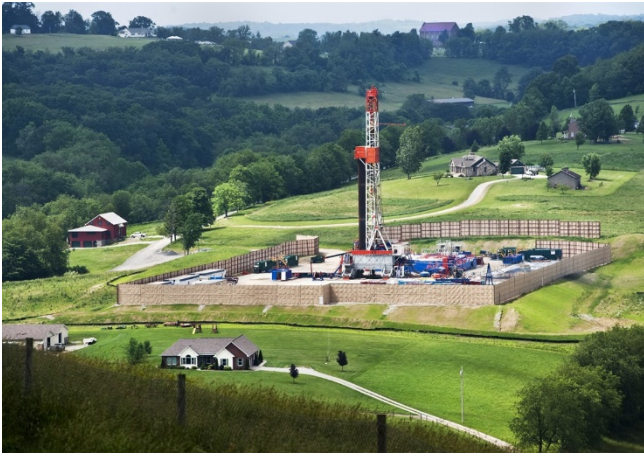
12321 Gilmerton Mist Ln
Riverview, FL 33579
p 800-860-4499
f (407)444-0335

MIAMI, FL

1155 97th St #201
Bay Harbor Is, FL 33154
p 800-860-4499
f (407)444-0335

JACKSONVILLE, FL

391 Ahern Street
Atlantic Beach, FL 32233
p 800-860-4499
f (407)444-0335



Well Pads

WELL HEAD

tubing and Casing Pressure: [Siemens DSIII, AST4600](#)

Plunger Arrival Sensor: [Turck Proximity Sensors](#)

Solenoid: Jordan Valve

Valves: Jordan, JVCS, Shutter

Wiring: [Turck Hazardous Area Quick Disconnects\(Process Wiring\)](#)

Wireless: [Banner DX99, OleumTech](#)

Hazardous Area Process Displays: [Precision Digital PD8-6000](#)

Gas Processing Units



Choke: Shutter Valve, Jordan

Wireless Monitors: [Banner DX99, OleumTech](#)

Hazardous Area Wiring: [Turck Process Wiring](#)

Level Switches for Dump Control: [Siemens CLS200/300](#) and [LVL200](#)

Gas and Flame Detection: [MSA X5000](#), [General Monitors S5000](#)

Produced Fluid Flow: [Siemens Mag3100/FC410](#), [Veris Accelabar](#)

Pressure Switches: [Neo-dyn 100P](#)

Visual Site Glass: [Quest-Tec Magnetrac](#)

Pneumatic Controller: Jordan Mk10/11

RTU: Unitronics/[PULS](#)/Turck

Hazardous Area Process Displays: Precision Digital

Temperature Transmitters: [Moore Industries RTI2](#), Siemens TF

Produced Fluid Tank Battery



Level Monitoring: Float Level Probe(Electrolab 2100), Radar(LR250FEA), Ultrasonic(ProbeLU), Pressure(DSIII)

Wireless for Level or Other: Banner(DX99), OleumTech

Gas/Flame Detection: MSA(X5000)/General Monitors(S5000)

Classified Area Cabling: Turck Process Wiring

Hazardous Area Process Displays: Precision Digital

Pressure: Siemens Transmitters DSIII, ITT Neo-Dyn Pressure Switches 100P, AST4600

Valve Positioners: Siemens PS2

Flare Gas Metering: FCI Thermal Mass(ST51/100), Siemens Ultrasonic(FS230G)

Flow: Siemens Coriolis(FC410)/Magmeters(3100)/Ultrasonic(ProbeLU)

Remote Monitoring/POWER

Wireless Telemetry: Banner(DXM100), OleumTech

Remote Power: GenTherm, Ameresco, Mr Solar

Remote I/O: Turck, Moore Industries(NCS)

Metering Stations

Control Valves/Regulators: Jordan Valve, Shutter Valve

Pressure Transmitters: Siemens, AST, Neo-Dyn

Metering Manifolds: Siemens

Wireless Monitors: Banner, OleumTech

Temperature Transmitters: Moore Industries, Siemens

Flow Check Meter: Siemens, FCI

Flow Metering: Veris, FCI, Siemens



Pipeline

Valve Positioners: [Siemens PS2](#)

**I/P Converters: [Moore Industries IPX2](#)(with
Natural Gas Supply Pressure Certification)**

Cathodic Protection I/O: Moore Industries CPMS

Solar Panels: Ameresco, Mr Solar

**Temperature Transmitters: SSI T/C's RTD's,
Siemens, Moore Industries**

Pressure Transmitters – Siemens, AST, Neo-Dyn

Wireless Monitors: Banner, [OleumTech](#)

**Flow Monitors – FCI meters and switches,
Siemens Ultrasonic, Veris DP**